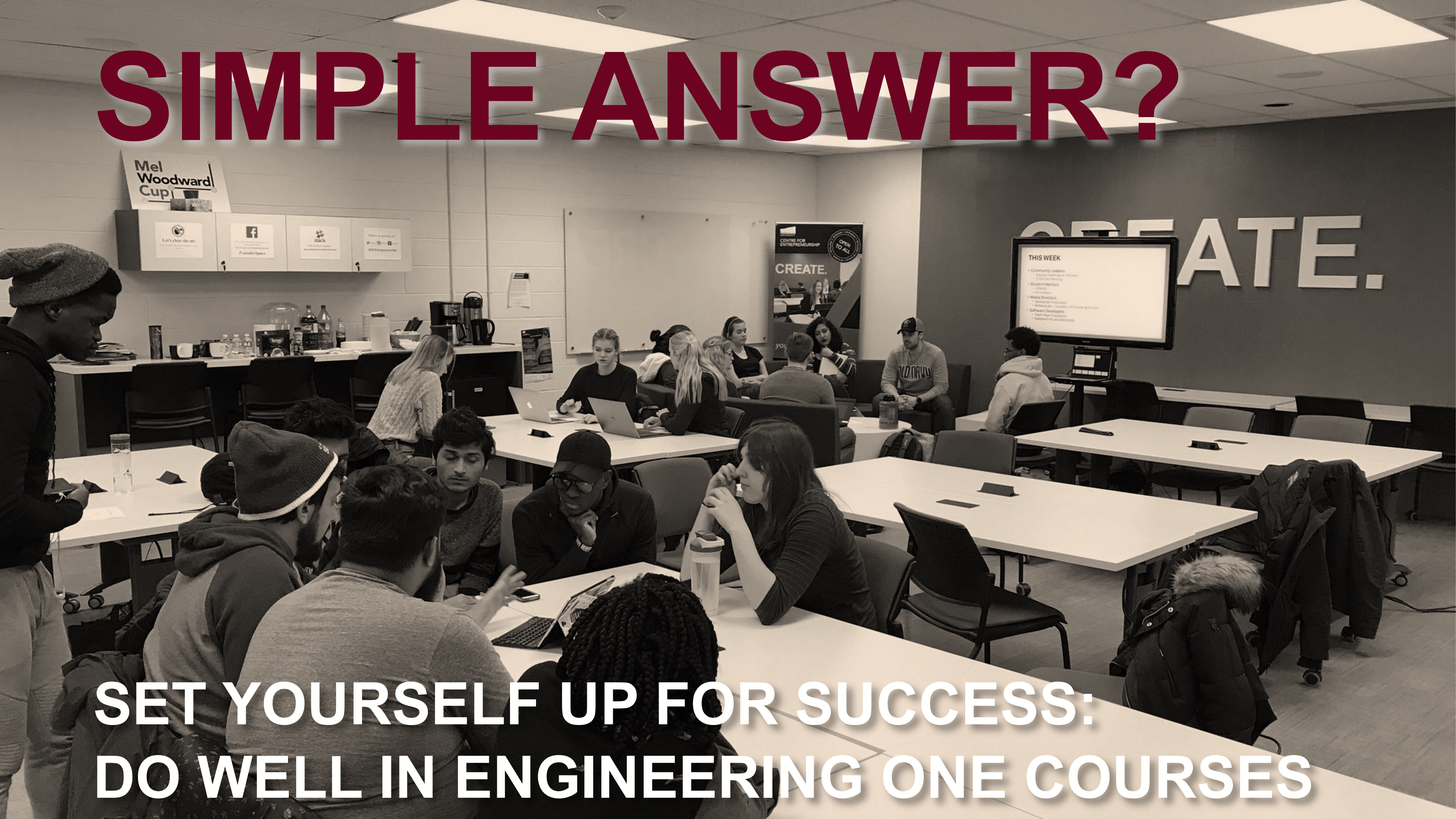


INFORMATION SESSION: THE TERM 3 MATCH

How do I get into my preferred major in Term 3?

SIMPLE ANSWER?



SET YOURSELF UP FOR SUCCESS:
DO WELL IN ENGINEERING ONE COURSES

THE PROCESS

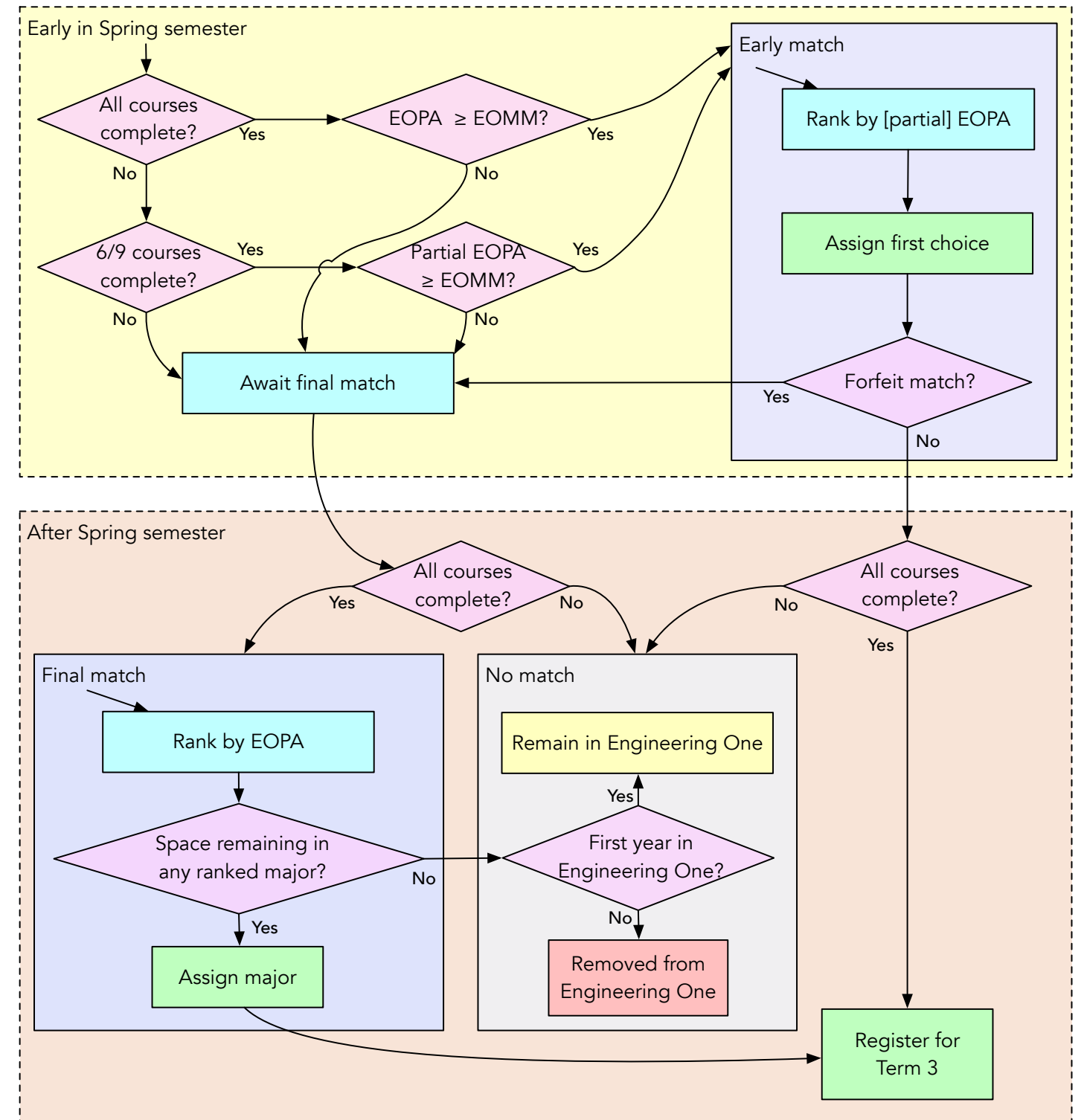
Timeline

Engineering Majors

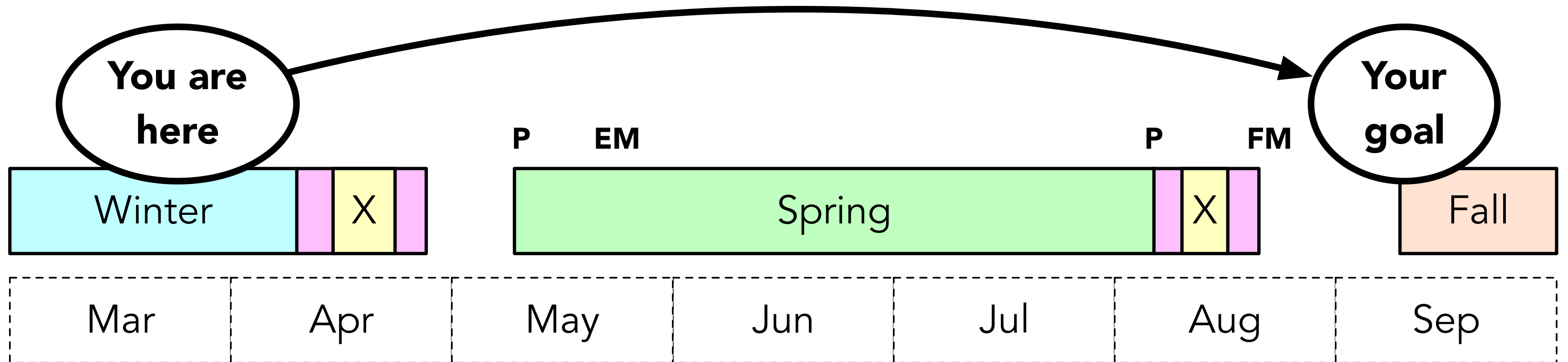
Engineering One Courses

Early Match

Final Match



TIMELINE



Sources (from the Calendar):

University Diary for the Academic Year 2022–23 (<https://www.mun.ca/regoff/university-diary-22-23>)

FEAS § 7.1 Promotion Status (Engineering One) — <https://www.mun.ca/regoff/calendar/sectionNo=ENGI-1174>

ENGINEERING MAJORS (FALL 2023-24)

Civil Engineering

Computer Engineering

Electrical Engineering

Mechanical Engineering

Mechatronics Engineering

Ocean & Naval Architectural Engineering

Process Engineering

TERM 3 PREFERENCES

Provide **up to four** preferences

Rank order (i.e., first choice, second choice...)

What do you want to do?

<https://www.mun.ca/engineering/undergrad/forms>

- Engineering One
- Programs
- Frequently Asked Questions
- Complementary Studies
- Engineering Co-op Education
- Technical Communications Resources
- Global Engineering Certificate
- Forms**
- Academic Integrity
- Undergraduate Policies
- Scholarships and Awards
- Get Involved
- Student Leadership and Innovation
- Iron Pin Ceremony
- Contact Us

Major Allocation Form

MUN Email address: *

Your answer

1st choice *

What is your top choice of Engineering major?

Choose
▼

2nd choice

What is your second preference (if you have one)? Do not repeat your first choice.

Choose
▼



PROMOTION AVERAGE

Nine course (four ENGI):

1000-level English (or any CRW course)

Chemistry 1050 (or equivalent)

Engineering 1010, 1020, 1030, 1040

Math 1001, 2050

Physics 1051

Average of what you've done **here** (not transfer)

PAS grades are **not** included in the average

Must pass with mark \geq **55%**, **not 50%**

“THE MATCH”

Early Match

Early in the Spring semester

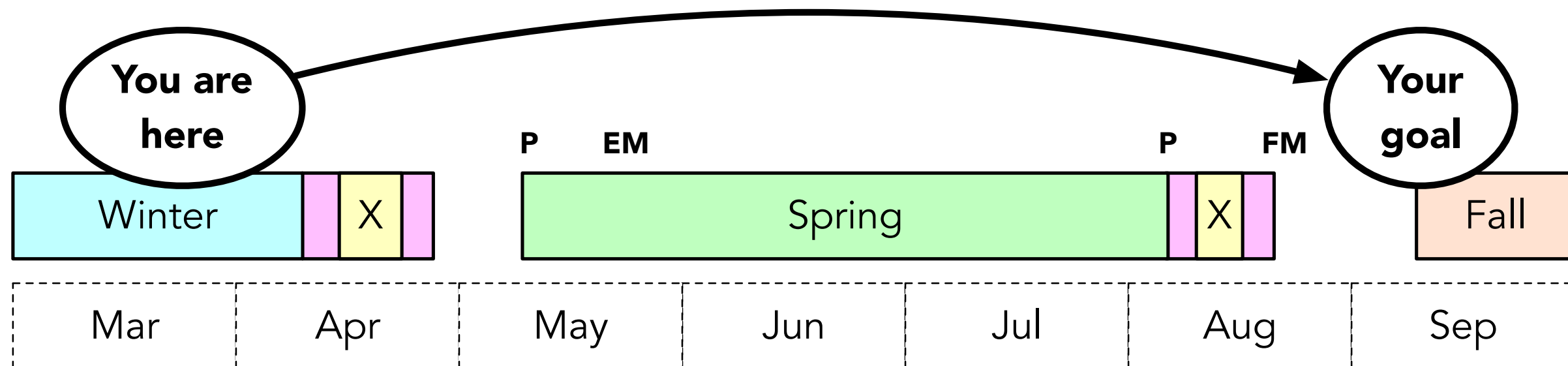
Students who are clearly on track to finish

Not final

Final Match

After the Spring semester

All Engineering One students



EARLY MATCH

Early in Spring semester

Need preferences by first day of Spring

Who is eligible?

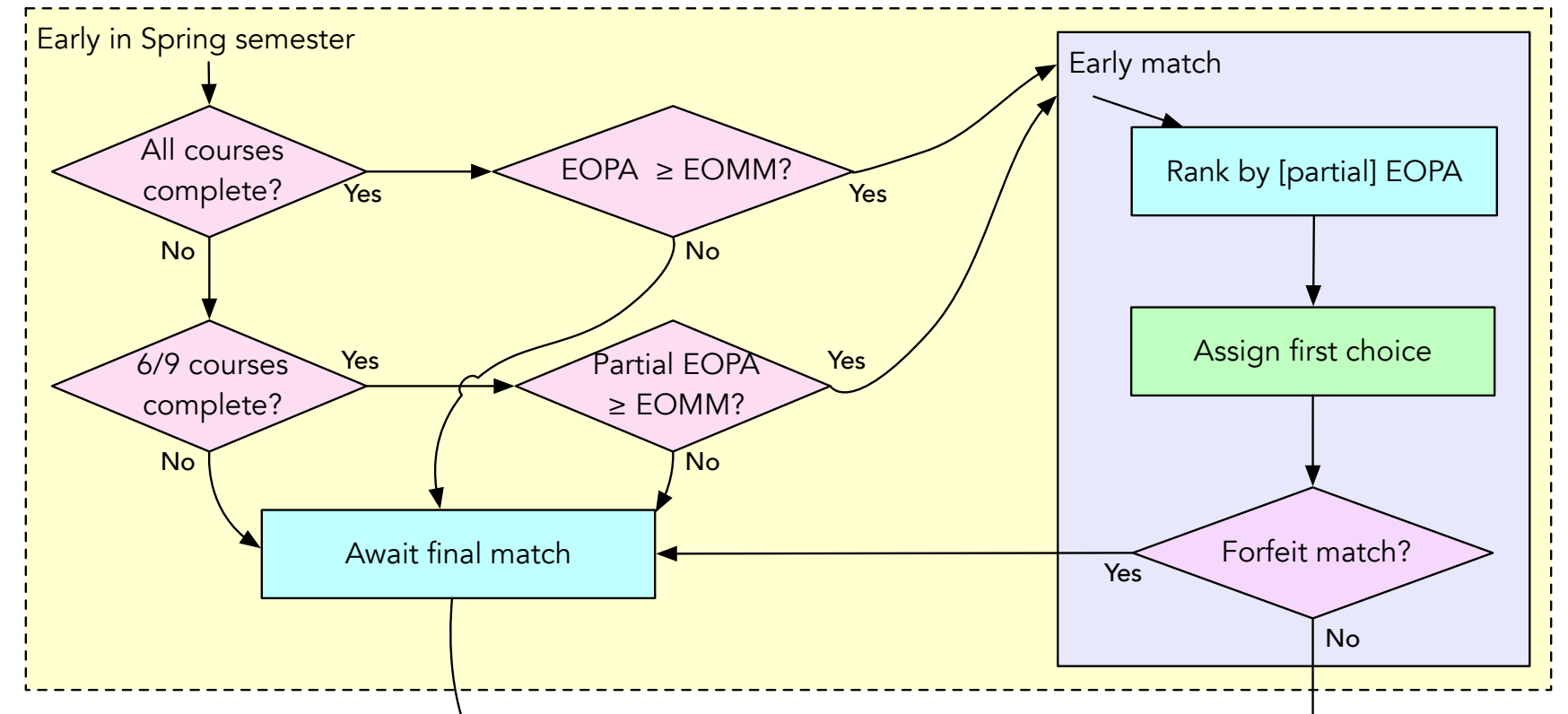
Finished at least 6/9 EO courses

$EOPA \geq EOMM$ (70-75%)

What happens?

We match students to their **first choice**

Stop when a major is **70% full** (space remains!)



FINAL MATCH

After Spring semester

Need preferences by end of Spring

Who is eligible?

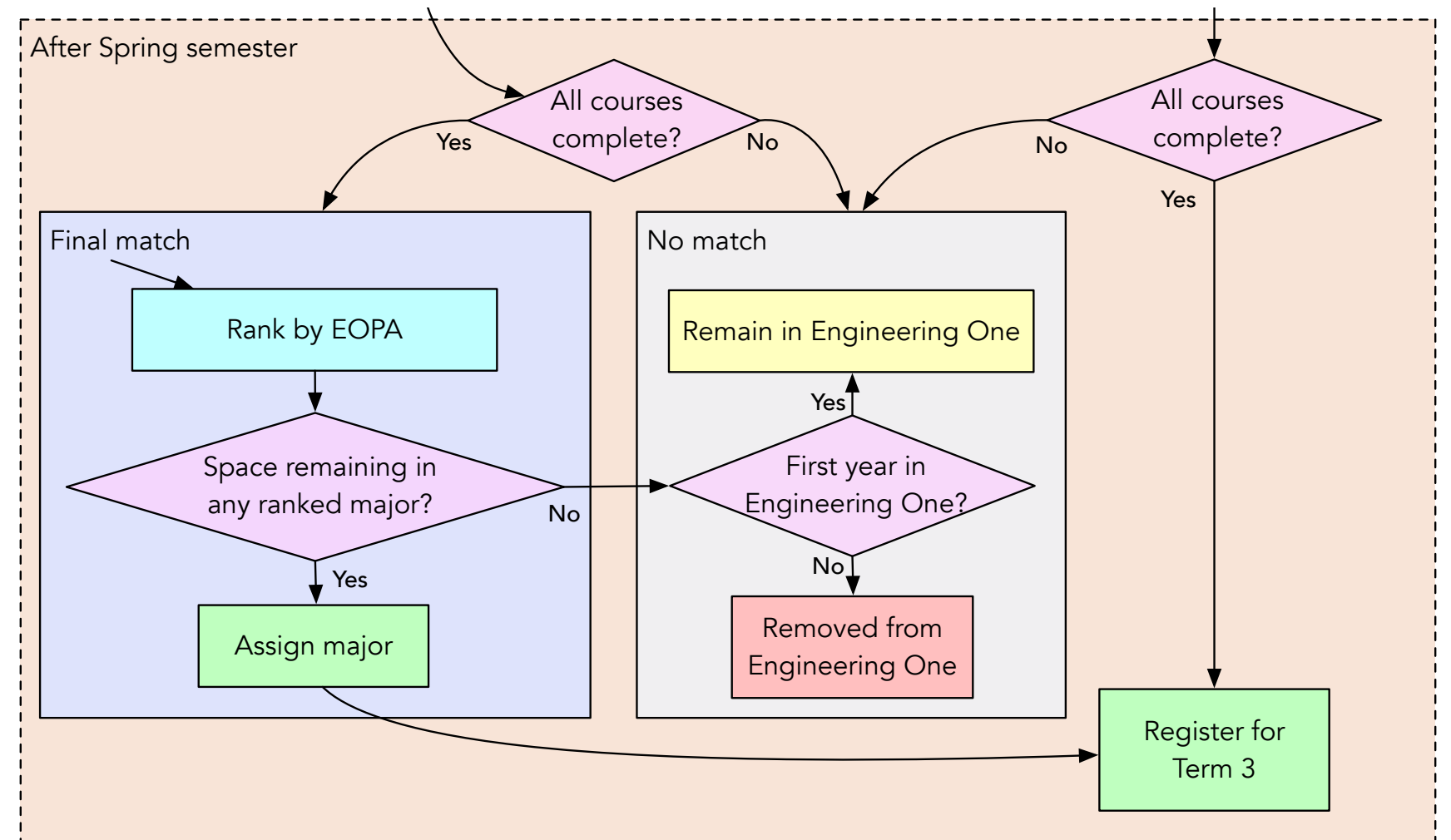
Everyone who wasn't matched early

Anyone who forfeits an early match

What happens?

We match students to **any preference**

Stop when **all majors are full**



GUARANTEES

Students accepted directly into ONAE

Guaranteed to match to ONAE **if first choice** on student major preference form (students with direct entry **are** permitted to change their mind)

Students with EOPA $\geq 75\%$

Guaranteed to match to their **first choice**

Students with $65\% \leq \text{EOPA} < 75\%$

No guarantees

Students with EOPA $< 65\%$

Not promotable

WHAT IF I DON'T GET A MATCH?

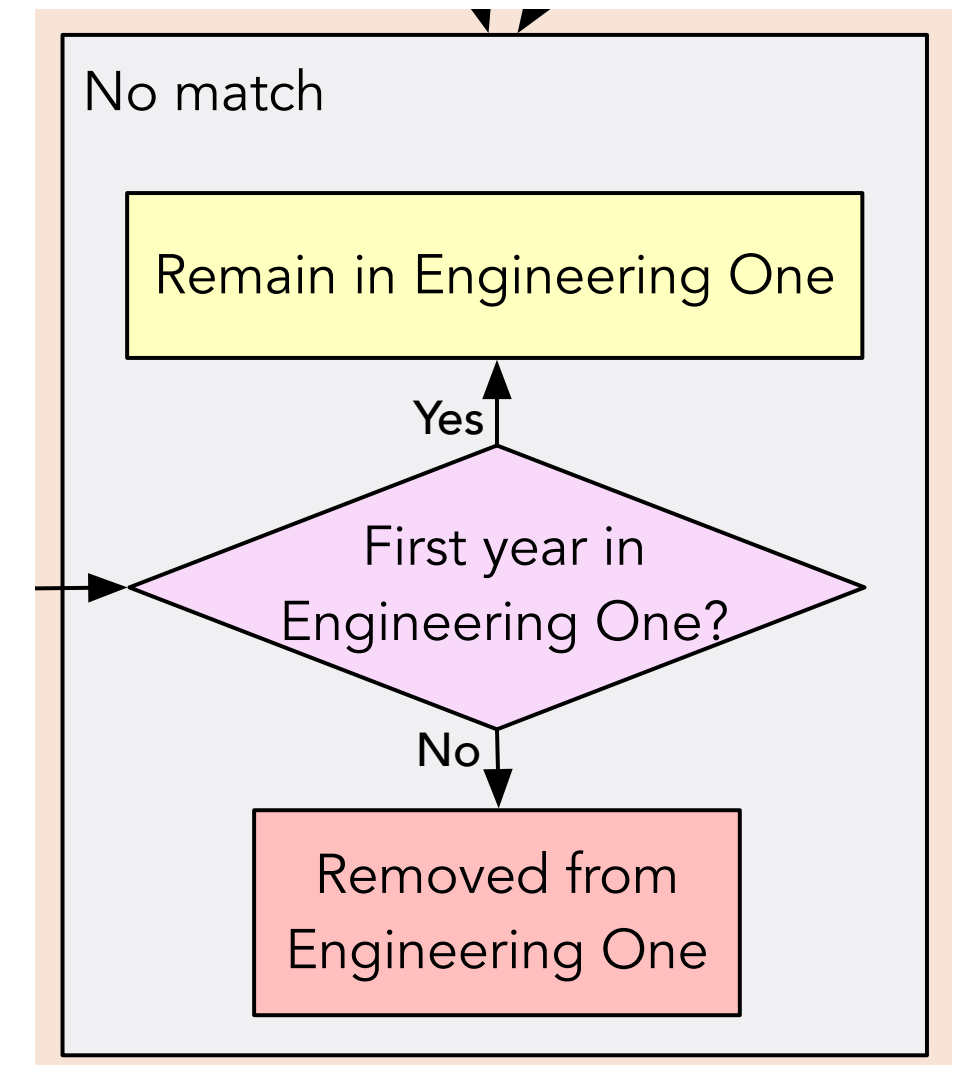
If you:

- haven't completed all EOPA courses (55% or better),
- have EOPA < 65% (not promotable) or
- have EOPA < 75% (and your prefs are full):

You have two years (two chances) to complete Engineering One

After first failed match, stay in Engineering One

After second failed match, out of program



THE PROCESS

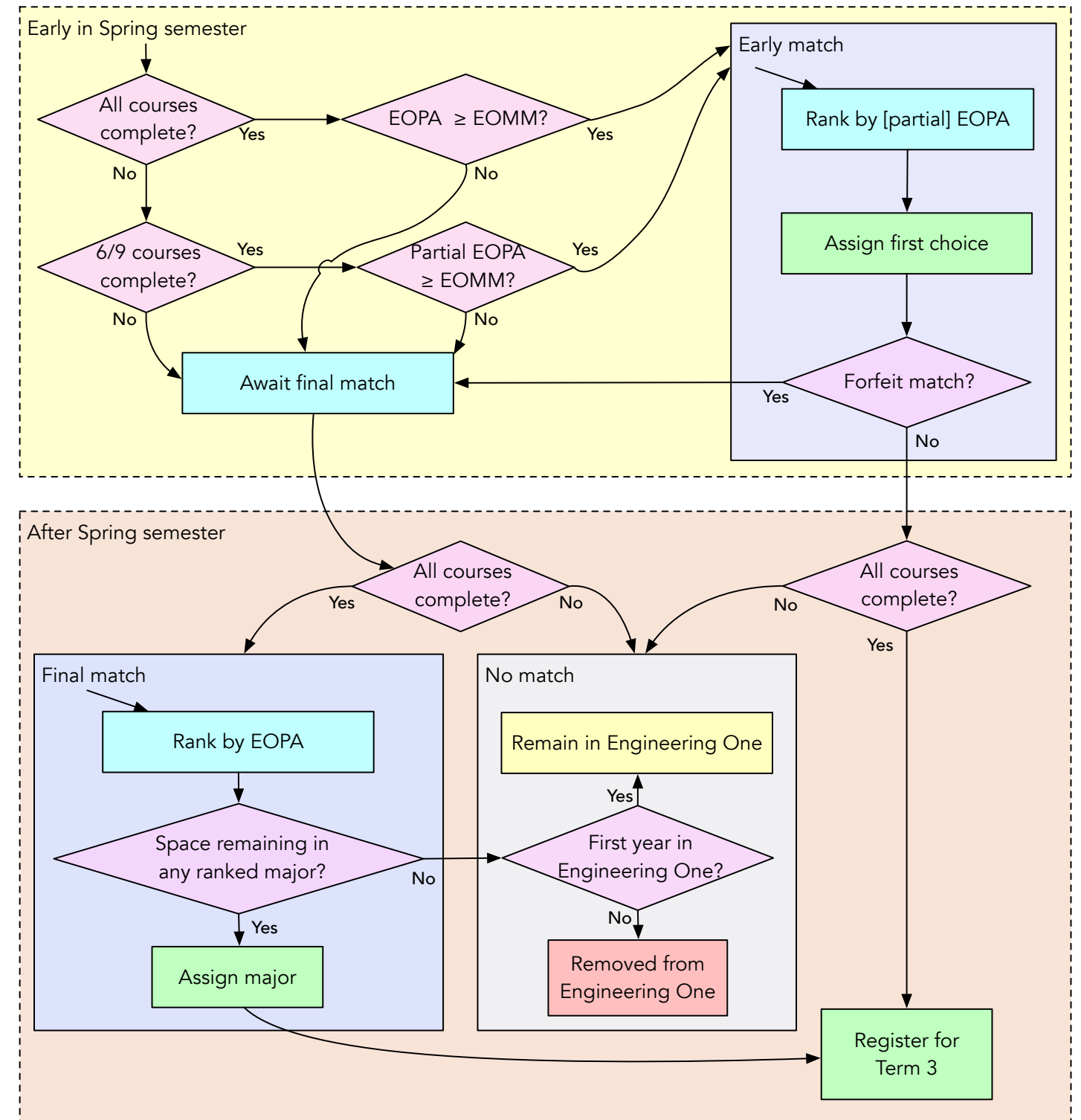
Timeline

Engineering Majors

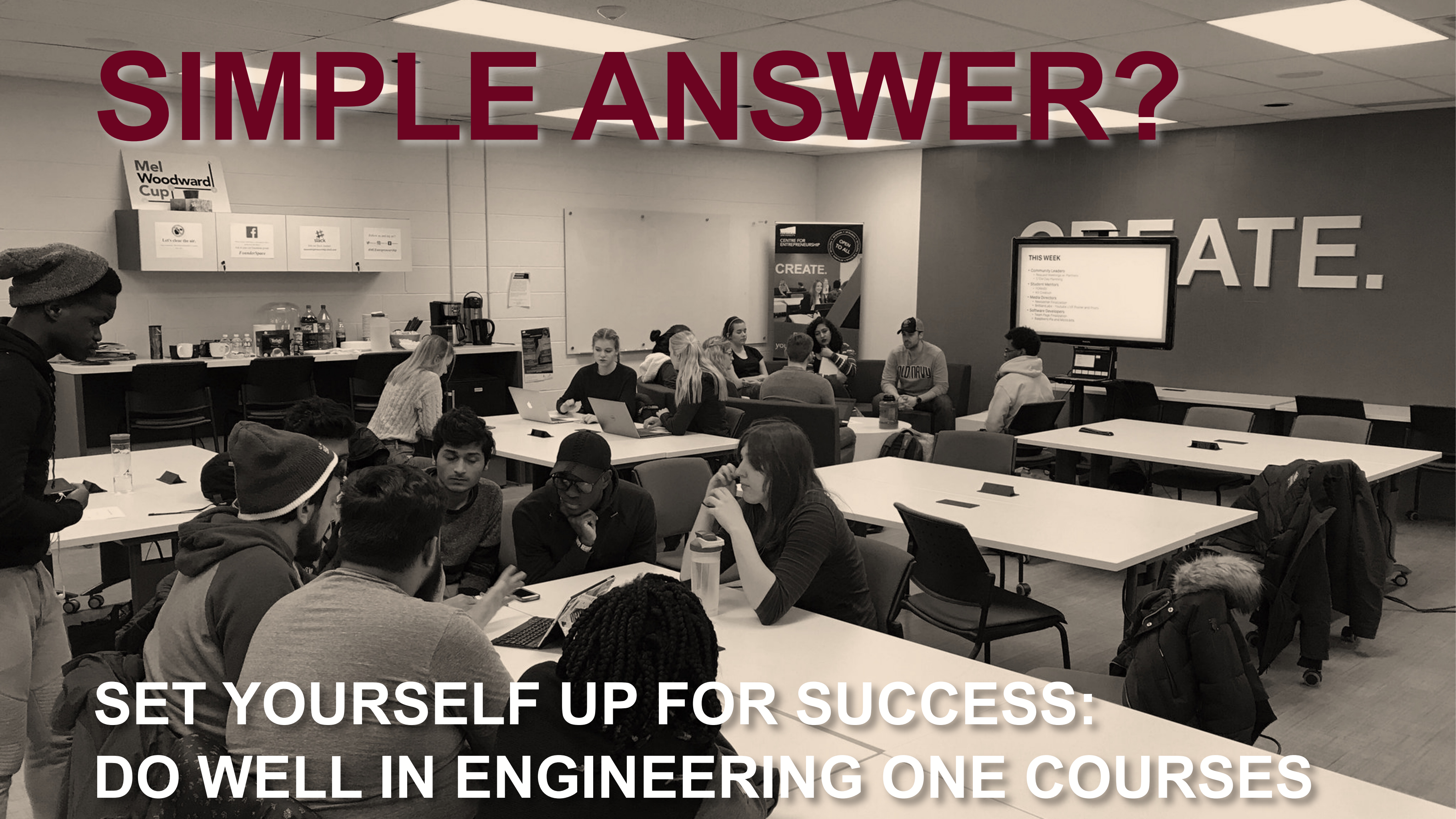
Engineering One Courses

Early Match

Final Match



SIMPLE ANSWER?



**SET YOURSELF UP FOR SUCCESS:
DO WELL IN ENGINEERING ONE COURSES**